



ঈদ



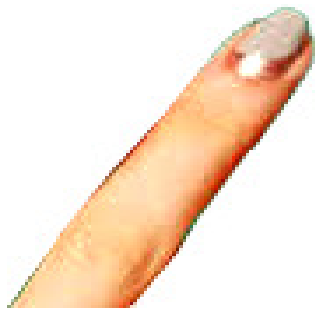
উট



উণ



গছ



নখ



ঘট



আম



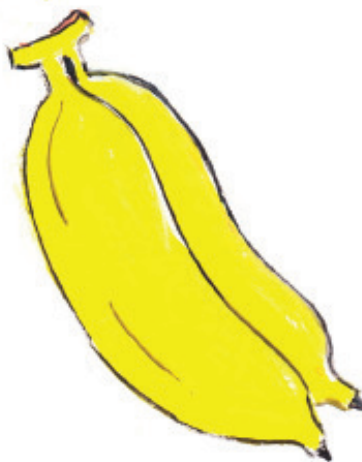
ঘৰ



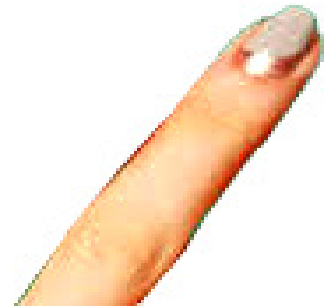
বল



গছ



কল



নখ



আম



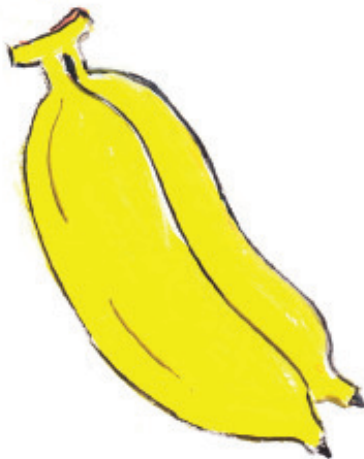
ঘর



বল



বথ



কলা



মম



ঈদ



উট



উণ



মম



ষথ



ঘট



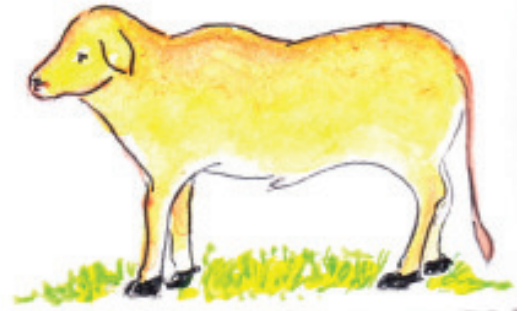
কলম



মলম



তগৰ



বলধ



কৰত



ৰবৰ



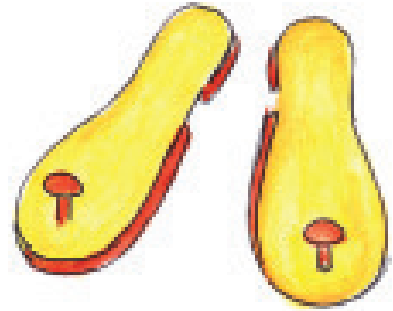
বটল



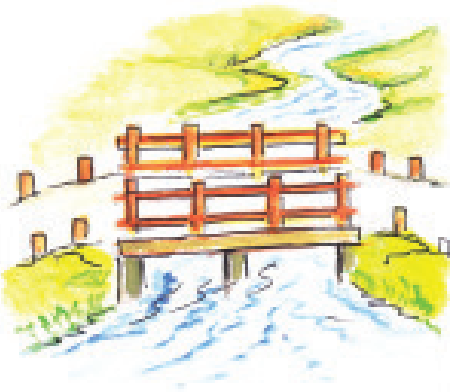
ভকত



কলহ



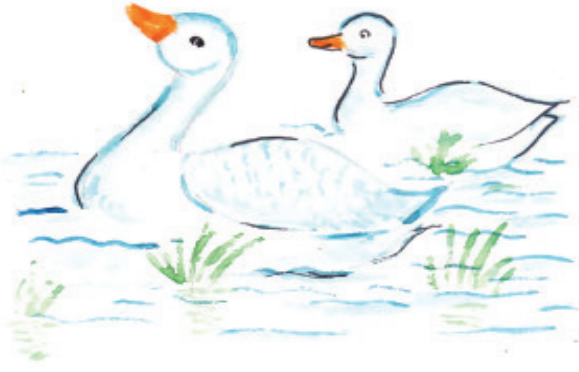
খৰম



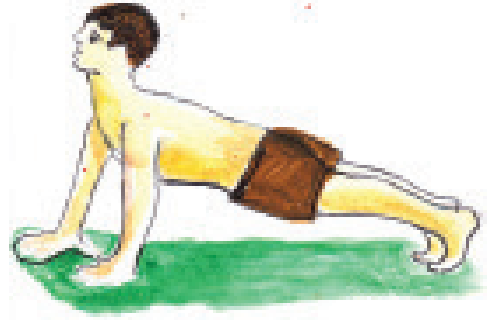
দলং



শংখ



হংস



কছৰং



সমদল



অজগৰ



কমল



জংঘল