



75  
Azadi Ka  
Amrit Mahotsav

GOVERNMENT OF ASSAM  
ASSAM SOCIETY FOR SOCIAL AUDIT  
O/o THE COMMISSIONER OF PANCHAYAT & RURAL DEVELOPMENT  
JURIPAR, PANJABARI, GUWAHATI-37

Email: sau.assam@gmail.com  
Telephone : 0361-2333645

No: ASSA/DIR/79/2021/48

Date: 17/10/2022

To,

✓ The Mission Director  
SSA, Assam

Sub: Submission of Brief Report on Social Audit of PM-POSHAN-reg

Sir,

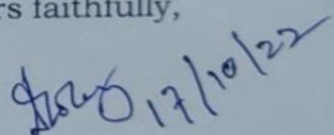
In inviting a reference to the subject cited above, I have the honour to furnish herewith the Brief Report on Social Audit of PM-POSHAN for the financial year 2021-22.

The Social Audit Report of PM-POSHAN is enclosed at Annexure- 'A' for your kind perusal and approval.

This is for your favour of kind information

Encl: As stated above.

Yours faithfully,

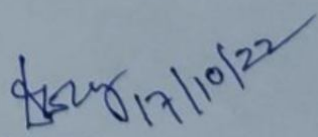
  
(H. C. Doley)  
Director,

Assam Society for Social Audit  
Date: 17/10/2022

Memo No: ASSA/DIR/79/2021/48-A

Copy to

1. P.S. to the Principal Secretary, Panchayat & Rural Development Department, Govt. of Assam, Dispur, Guwahati-06 for kind appraisal of the Principal Secretary, Panchayat & Rural Development Deptt.
2. Office copy.

  
Director,  
Assam Society for Social Audit

# **BRIEF REPORT ON SOCIAL AUDIT OF PM-POSHAN IN ASSAM FOR FY-2021/22**



অসম চৰকাৰ



सत्यमेव जयते

GOVERNMENT OF ASSAM



## **ABSTRACT**

To enhance the enrollment, retention, attendance and simultaneously improve the nutritional level among school going children studying in classes I to VIII of Govt., Govt. aided schools and schools supported under Sarba Shiksha Abhiyan. The scheme guidelines envisage providing cooked Mid-Day Meal with 400 calories & 12g of protein to every child at primary level & 700 calories & 20g of protein at upper primary level.

## **OBJECTIVE OF PM-POSHAN**

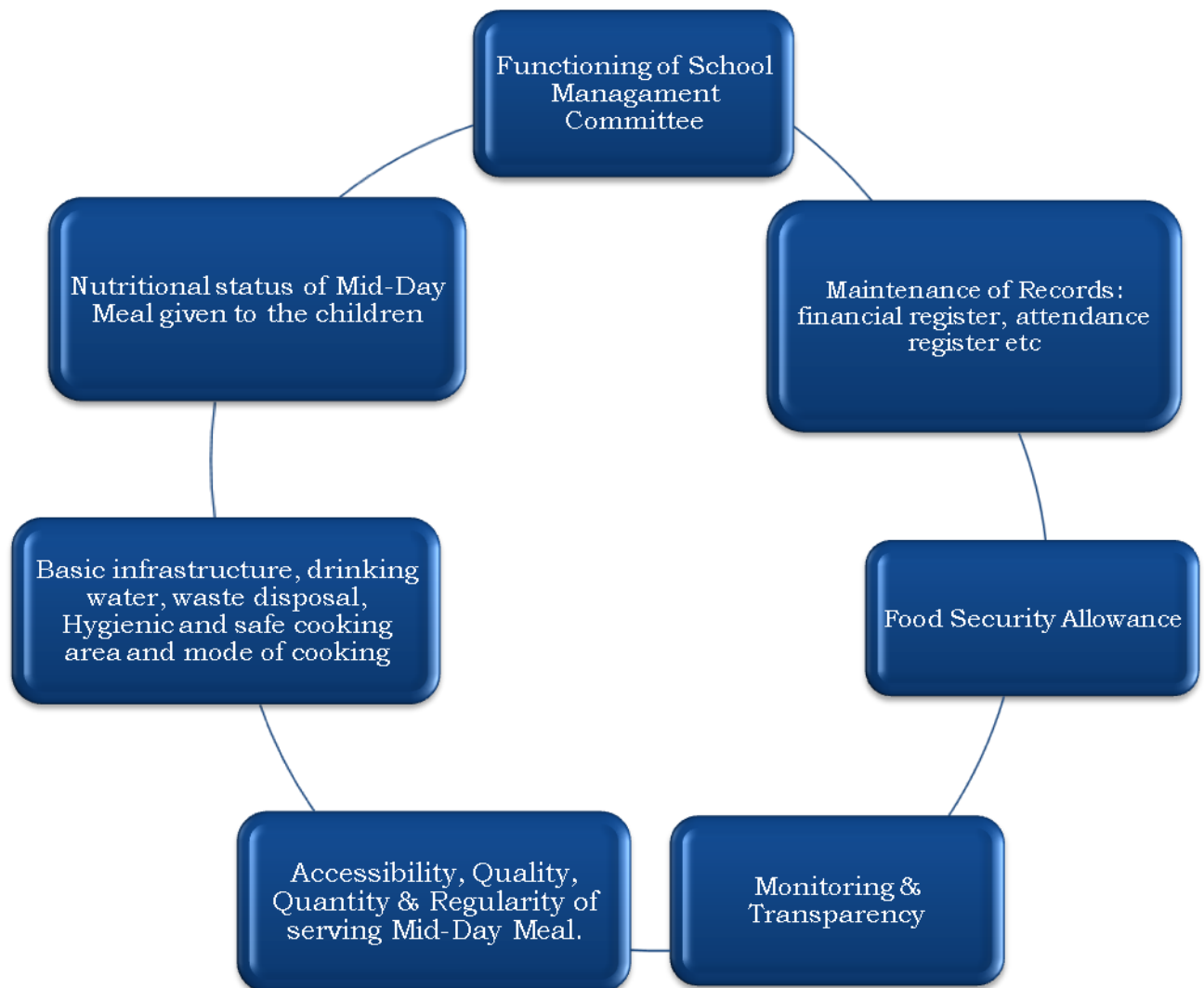
The main objective of PM-POSHAN scheme is to address two of the pressing problems for majority of children in India i.e. hunger & education by improving the nutritional status of eligible children in Govt. & Govt. aided schools as well as encouraging poor children belonging to vulnerable section of society. The major objectives of PM-POSHAN are mentioned below:

- 1) To improve the nutritional status of the children enrolled in the classes' I-VIII in Govt., Govt. aided and local body schools, but also children studying in Education Guarantee Scheme & Alternative and Innovative Education Centers including Madarsa/Maqtabs run under Sarba Shiksha Abhiyan.
- 2) To motivate children belonging to vulnerable section to attend Primary schools regularly and help them to concentrate on school & classroom activities.
- 3) To provide nutritional support to children of Primary stage in drought affected areas in summer vacation, thereby ensuring their continued interest in schooling.

## **LEGAL MANDATE OF SOCIAL AUDIT OF PM-POSHAN**

In compliance to the guidelines for conducting social audit of Mid-day meal Scheme issued by Govt. of India vide letter F. No.-5-35/2013/MDM1-1, dated- 3<sup>rd</sup> July, 2014, Assam Society for Social Audit has been conducting Social Audit of PM-POSHAN in Assam from the financial year 2021-22. During the financial year 2021-22, Assam Society for Social Audit (ASSA) has conducted Social Audit of PM-POSHAN in 447 schools covering 33 districts of Assam against the total target of 460 schools.

## **SOCIAL AUDIT PARAMETERS OF PM-POSHAN**



## **SOCIAL AUDIT PROCESS OF PM-POSHAN**

To ensure smooth conduct of Social Audit of PM-POSHAN in Assam, a virtual briefing meeting was organized by Sarba Shiksha Mission Assam. The Officials from Ministry of Education, Govt. of India and State, District & Block level Officials of Assam Society for Social Audit and Sarba Shiksha Mission Assam were attended the meeting.

The Social Audit Cycle of PM-POSHAN is of 4 days including the Social Audit School Sabha. The details of activities carried out in schools during the process of Social Audit are mentioned below:

- a. Entry point Meeting: To facilitate and coordinate the entire process of social audit, a Team of Social Auditor at School comprising of Head Teacher/Principal, SMC Members, local PRI/Ward members, representatives from parents, vigilant senior citizen and community organizations were constituted. The Social Audit Team was formulated with the State Officials, District & Block Resource Persons of Assam Society for Social Audit.

In Entry Point Meeting, the Social Audit team interact with the Principal/Head Teacher/SMC to understand the day to day functioning of the schools and their roles and responsibilities towards achieving the target of the Mission.

- b. Verification of Records: Under the process of verification of records, the Social Audit Team cross checks the records maintained by school i.e financial register, attendance register, Mid-Day Meal register, Passbook, Mid-Day Meal Tasting Register etc.
- c. Interaction with Students: Through the process of interaction with students, the Social Audit Team mainly try to know & assess regarding the Quality & Quantity of food given to the children, the regularity of meal served, the nutritional status of Mid-Day Meal given to the children, awareness about PM-POSHAN amongst the students' & social inclusion issues such as sitting & eating together.
- d. Household Verification & Interaction with Parents: Considering to the Covid-19 Pandemic, the food grains were distributed to the house of the Children under National Food Security Allowance. So while interacting with the parents, the Social Audit Team try to understand the Quality, Quantity & regularity of the food grains served.
- e. Verification of basic infrastructure & kitchen shed: In this process, the Social Audit Team verify the hygienic condition of cooking area, mode of cooking, status of kitchen cum stores & utensils available in the school.
- f. Consolidation of Social Audit Reports: Based on the data/inputs collected during the process of interaction with Principal/Head Teacher/SMC Members, Children, Parents, Verification of Records, the School wise Social Audit Reports are prepared to place before the School Sabha.
- g. Social Audit School Sabha: The Social Audit School Sabha is a platform to read out the findings of the Social Audit amongst all the stakeholders of PM-POSHAN i.e Principal/Head Teacher, SMC Members, Students & Parents Community, Public Distribution System (PDS) Agent, Supplier of food grains as to sought & record their views regarding various aspects of PM-POSHAN.

- h. Cluster Level Public Hearing: The Cluster Level Public Hearing is conducted while combining 10 Nos. of Schools. In the Cluster Level Public Hearing, the School Wise Social Audit findings are read out by the Social Audit Team.

In the Cluster Level hearing, the concerned responsible functionaries provide explanation in public as to why certain irregularities are identified during Social Audit. Further the concerned responsible officials also ensure the specific time period & nature of action will be taken to rectify a particular irregularity.

**DISTRICT WISE COVERAGE OF SOCIAL AUDIT OF PM-POSHAN**

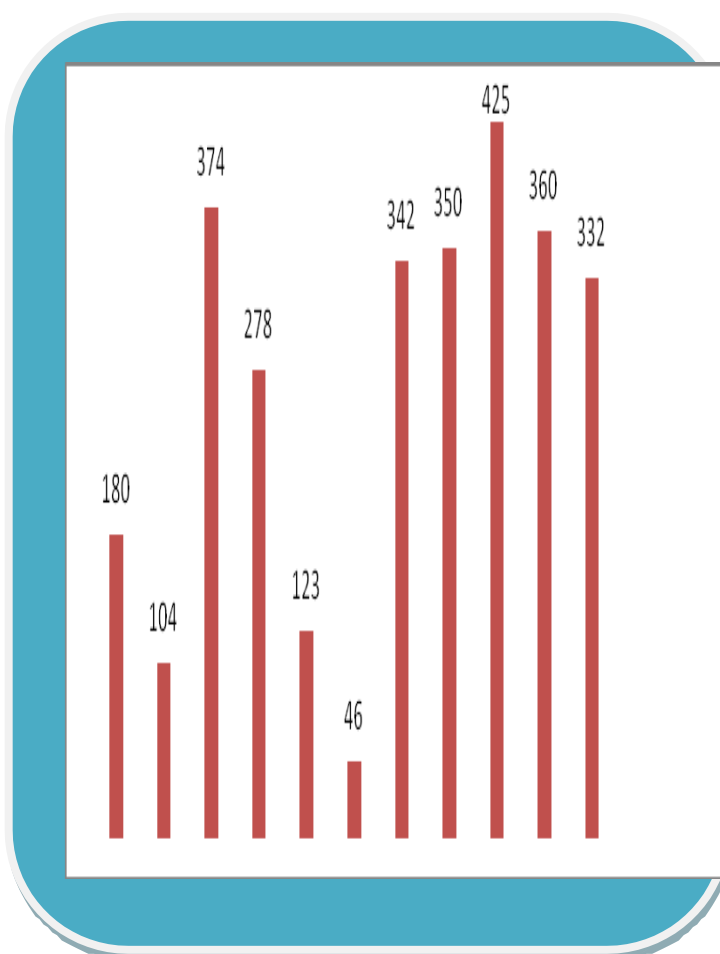
<b>Sl No</b>	<b>Name of the District</b>	<b>Total School covered</b>
1.	Baksa	20
2.	Barpeta	19
3.	Biswanath	10
4.	Bongaigaon	10
5.	Cachar	20
6.	Charaideo	10
7.	Chirang	10
8.	Darrang	16
9.	Dhemaji	20
10.	Dhubri	20
11.	Dibrugarh	20
12.	Dima Hasao	10
13.	Goalpara	10
14.	Golaghat	10
15.	Hailakandi	10
16.	Hojai	10
17.	Jorhat	10
18.	Kamrup(m)	10
19.	Kamrup	20
20.	Karbi Anglong	05
21.	West Karbi Anglong	05
22.	Karimganj	20
23.	Kokrajhar	10
24.	Lakhimpur	13
25.	Majuli	7
26.	Morigaon	19
27.	Nagaon	20
28.	Nalbari	19
29.	Sivasagar	10
30.	Sonitpur	16
31.	South Salmara	10
32.	Tinsukia	10
33.	Udalguri	18
<b>Total</b>		<b>447</b>

## MAJOR SOCIAL AUDIT FINDINGS OF PM-POSHAN

### I. Maintenance of Basic Infrastructure (District wise Details in Annexure 1)

The infrastructure of a school is an important parameter which plays a vital role towards monitoring the implementation of Mid Day Meal Scheme in Schools. Maintenance of basic infrastructure includes the facilities namely, kitchen garden, quality of kitchen garden, safe and hygienic cooking area, quality of kitchen shed, availability of cooking utensils, mode of cooking, availability of soap, hand wash, drinking water and hygienic toilets, availability of Hygienic dining area etc. Accordingly, the Social Audit Team cross checks the availability of the above mentioned facilities in schools during the process of Social Audit.

SL	Deliverables	No. of Schools
1	Schools having kitchen gardens	180
2	Kitchen garden maintained well in nos of schools	104
3	Schools with safe and hygienic cooking area	374
4	Schools with full kitchen shed	278
5	Schools with partial kitchen shed	123
6	Kitchen shed not available in schools	46
7	Schools where safe storage of food grains is available:	342
8	Schools where available cooking utensils is sufficient.	350
9	Traditional means of cooking only on woods	425
10	Wash component like soap, hand wash, drinking water and hygienic toilets are available fully	360
11	Availability of Hygienic dining area	332



## **Major findings in terms of Maintenance of Basic Infrastructure**

### **A. Kitchen Garden :**

- In the districts namely, Kamrup Rural, Chirang, Charaideo, Jorhat and Nagaon kitchen gardens was not found during the process of Social Audit.
- Among the 180 Nos of schools where kitchen garden is available, only 104 Nos of schools kitchen gardens was found satisfactory. Especially, in Darrang district kitchen garden was available in 2 schools against the audited 15 schools.

### **B. Hygienic Cooking area and Kitchen Shed**

- In terms of hygienic cooking area, the 73 nos of schools didn't have hygienic cooking area. These were due to lack of infrastructure facilities or damaged of infrastructure.
- In Dima Hasao District, kitchen shed was not found in the schools during the Social Audit process.

### **C. Safe Storage of Food Grains and other Food items**

- Out of the Total 447 schools where Social Audit was conducted, it was found that the Safe storage of food grains and other food items was maintained in 374 Nos. of schools. The safe storage of food grains and other food items was not maintained especially in the districts namely Hailakandi, Morigaon, Nagaon, Karimganj, Kamrup (M).

### **D. Availability of sufficient cooking utensils**

- During the process of Social Audit it was reported that in the schools of Kamrup & Dhubri district the cooking utensils were not available.

### **E. Mode of Cooking**

- Out of the total 447 Audited schools, 5 schools of Bongaigaon, 2 schools of Hojai and in 1 school of Kamrup Metro both LPG and firewood was used for cooking.
- Out of the total 447 Audited schools, 4 schools of Nagaon , in the 3 schools of Karimganj, 2 schools of Kamrup Metro , 2 schools of Charaideo , 2 schools of Hojai and in 1 school of Kokrajhar mode of cooking is on LPG.

### **F. WASH - Soap, Hand Wash, Drinking Water, Hygienic Toilet facility**

- Out of the total 447 Audited schools, the schools of Dima Hasao, Kamrup and South Salmara Mankachar WASH facilities were partially available.

### **G. Hygienic Dining area**

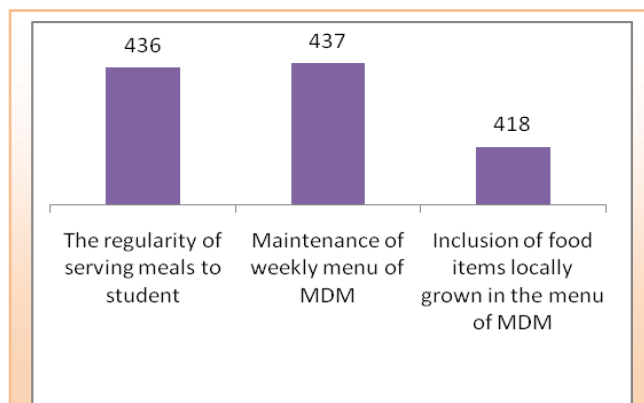
- Out of the total 447 Audited schools in 33 districts, the hygienic condition of Dinning area was not found satisfactory in the districts of Karbi Anglong & Dima Hasao.



## II MDM Supply (District wise Details in Annexure- 2)

**Table 2: Figures in terms of MDM Supply**

SL	Deliverables	No.of Schools
1	The regularity of serving meals to student	436
2	Maintenance of weekly menu of MDM	437
3	Inclusion of food items locally grown in the menu of MDM	418



### **Major Social Audit Findings in terms of MDM Supply**

#### **1. The regularity of serving meals to student**

- Out of the total 447 Audited schools in 33 districts, it was found that regularly meal was served in 436 No. of Schools. It was reported that in 5 schools of Dima Hasao, followed by 2 schools of Chirang & Dhubri and 1 schools of Morigaon & Karimganj district Mid-Day Meal was not served regularly to the students.

#### **2. Maintenance of weekly menu of MDM**

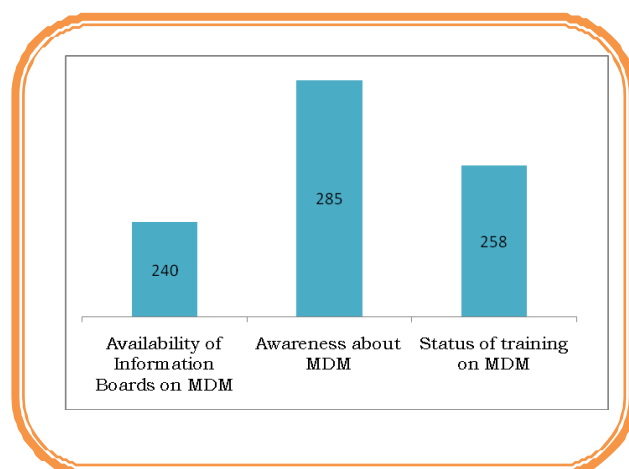
- Out of the total 447 Audited schools in 33 districts, it was found that the weekly menu of MDM was maintained in 437 No. of Schools. It was reported that in 5 schools of Dima Hasao, followed by 2 schools of Chirang & Dhubri and 1 schools of Karimganj district weekly menu of MDM was not maintained.

#### **3. Inclusion of food items locally grown in the menu of MDM**

- Out of the total 447 Audited schools in 33 districts, it was found that in 418 Nos of schools locally grown food item was included in the Menu of MDM. Especially, in the districts of Dima-Hasao, in all 10 audited schools it was found that locally grown food item was not included in MDM Menu.

### III Awareness and Training (District wise Details in Annexure-3)

SL	Deliverables	No. of Schools
1	Availability of Information Boards on MDM	240
2	Awareness about MDM	285
3	Status of training on MDM	258

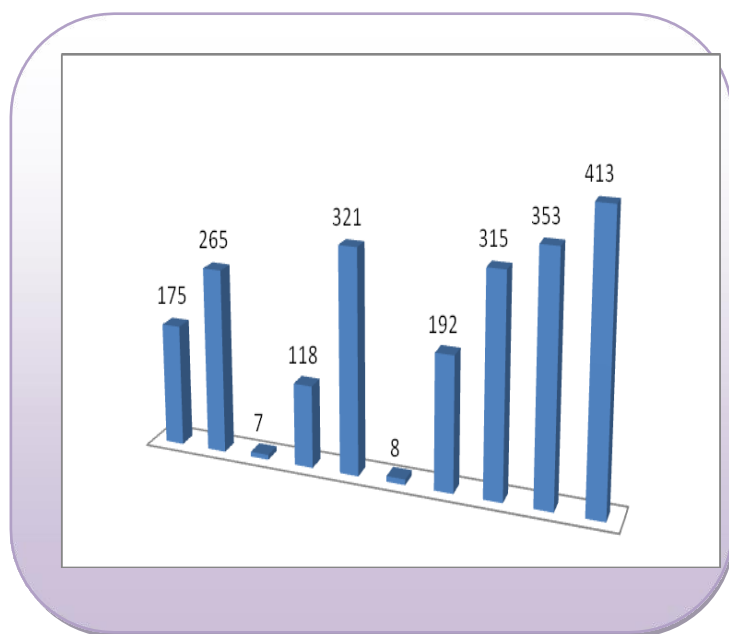


#### Major Social Audit Findings on Awareness and Training on MDM

- Out of the total 447 Audited schools in 33 districts, it was found that information board on MDM was available in 240 No of Schools. It is pertinent to mention here that in the districts namely, Bongaigaon, Tinsukia, Udalguri, Dima Hasao, Dhubri and Charaideo, Golaghat, Baksa, West Karbi Anglong and Nalbari information boards on MDM was not found.
- Out of the total 447 Audited schools in 33 districts, the awareness about MDM was found in 285 No. of schools. In the districts namely, Goalpara, Udalguri, Kokrajhar, Dhubri, West Karbi Anglong and Charaideo district the awareness on MDM is not satisfactory.
- Out of the total 447 Audited schools in 33 districts, the trained staffs on MDM were found in 258 Schools. In rest of the 189 schools there were no trained staffs on MDM.

#### IV. Documents Verification (District wise Details in Annexure 4)

SL	Deliverables	No. of Schools
1	Submission of all the relevant documents to the Social Audit Team	175
2	Partial submission of documents to the Social Audit Team	265
3	Documents not produced	7
4	Documents related to MDM maintained properly	118
5	Documents related to MDM are partially maintained	321
6	Documents not maintained	8
7	Availability of Health Records including distribution of medical and health cards	192
8	Availability of Emergency Medical Facilities	315
9	Maintenance of MDM Food Tasting Register	353
10	Maintenance and updation of MDM passbook	413



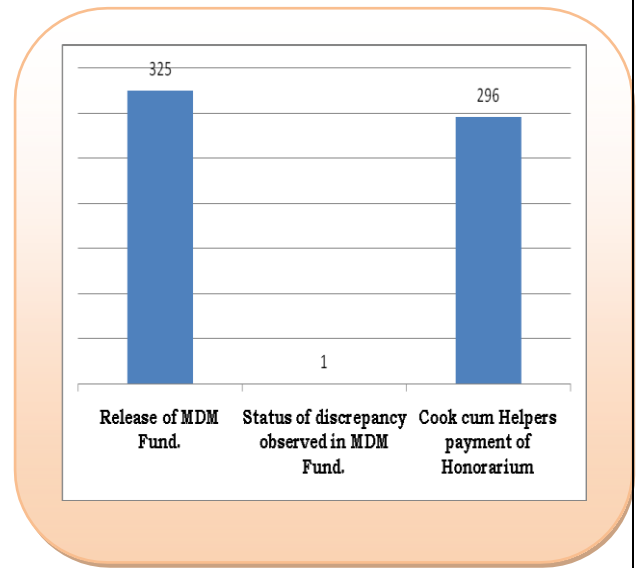
#### Major Findings in terms of documents verification

1. In regards to submission of relevant documents to the Social Audit team, it was found that out of the total 447 audited Schools, 175 No. of Schools submitted all documents related to MDM followed by 265 schools partially submitted the documents and 7 No. of schools did not submit any kind of documents related to MDM. The district which did not submit any kind of documents are Dima Hasao and Karimganj (2 schools each) and Dhubri, Cachar and Darrang (1 schools each).
2. In terms of maintenance of records related to MDM it was found that out of the total 447 audited schools, 118 schools maintained record properly followed by 321 schools maintained record partially and 8 schools did not maintained any record. It is pertinent to mention that in 2 schools each of Karimganj and Dima Hasao district and 1 school each of Darrang, Dhubri, Cachar and Kokrajhar the relevant documents had not been maintained.

3. Out of the total 447 audited schools, it was found that in 192 schools medical and health cards was distributed and in rest 255 schools medical and health card were not available.
4. Out of the total 447 audited schools, emergency medical facility was available in 315 schools and in rest 132 schools emergency medical facility was not found during the process of social audit.
5. Out of the total 447 audited schools, MDM Food tasting Register was maintained in 353 schools and in rest 94 schools MDM food tasting register was not found during the process of social audit.
6. Out of the total 447 audited schools, MDM Passbook was maintained properly in 413 schools.

**V. MDM Fund Related (District wise Details in Annexure 5)**

SL	Deliverables	No. of Schools
1	Release of MDM Fund.	325
2	Status of discrepancy observed in MDM Fund.	1
3	Cook cum Helpers payment of Honorarium	296



**Major Findings regarding MDM Fund**

1. Out of the total 447 audited schools, MDM fund was released on regular basis to 325 No. of schools. In the districts namely, Biswanath, Dibrugarh, Sivasagar, Nagaon, Dhemaji, Golaghat and Dhubri irregularity in receiving MDM Fund had been reported during the Social Audit Process.
2. In terms discrepancy of MDM fund, it was reported in 1 school out of the total 447 audited Schools. The details of the school in which discrepancy was reported is mentioned below:

Name of the School - Ghilamora Town High School  
 Elementary Block - Bordoloni District - Lakhimpur

3. Out of the total 447 audited schools, it was found that in 296 schools Cook cum Helpers payment of honorarium was paid on regular basis. Irregularity in terms of payment to cook cum helpers was reported in the districts namely, Biswanath, Bongaigaon, Dhemaji, Kamrup Metro, Karimganj, Charaideo, Kamrup Rural, Baksa and Nalbari.

## District wise Status Cluster Level Public Hearing

SL	Name of the District	Schedule of Cluster Level Public Hearing	Remarks
1	Baksa	27 <sup>th</sup> , 28 <sup>th</sup> , 29 <sup>th</sup> & 30 <sup>th</sup> April 2022	Completed.
2	Barpeta	18 <sup>th</sup> August 2022	Completed
3	Biswanath	18 <sup>th</sup> & 19 <sup>th</sup> May 2022	Completed
4	Bongaigaon	18 <sup>th</sup> May 2022	Completed
5	Cachar	18 <sup>th</sup> , 19 <sup>th</sup> & 20 <sup>th</sup> May and 17 <sup>th</sup> , 18 <sup>th</sup> & 22 <sup>nd</sup> August 2022	Completed
6	Charaideo	25 <sup>th</sup> & 26 <sup>th</sup> April 2022	Completed
7	Chirang	18 <sup>th</sup> & 19 <sup>th</sup> May 2022	Completed
8	Darrang	18 <sup>th</sup> & 19 <sup>th</sup> May 2022	Completed. The Officials from Ministry of Education, Govt. of India and Sarba Shiksha Mission, Assam attended the cluster level Public Hearing.
9	Dhemaji	17 <sup>th</sup> & 18 <sup>th</sup> August 2022	Completed
10	Dhubri	25 <sup>th</sup> , 26 <sup>th</sup> , 27 <sup>th</sup> & 28 <sup>th</sup> April and 17 <sup>th</sup> August 2022	Completed
11	Dibrugarh	25 <sup>th</sup> , 26 <sup>th</sup> & 27 <sup>th</sup> April 2022	Completed
12	Dima Hasao	25 <sup>th</sup> , 26 <sup>th</sup> & 27 <sup>th</sup> April 2022	Completed
13	Goalpara	17 <sup>th</sup> , 18 <sup>th</sup> & 22 <sup>nd</sup> August	Completed
14	Golaghat	17 <sup>th</sup> & 18 <sup>th</sup> August 2022	Completed
15	Hailakandi	20 <sup>th</sup> May 2022	Completed
16	Hojai	18 <sup>th</sup> & 19 <sup>th</sup> May 2022	Completed
17	Jorhat	17 <sup>th</sup> , 18 <sup>th</sup> & 22 <sup>nd</sup> August 2022	Completed
18	Kamrup (M)	25 <sup>th</sup> April 2022	Completed
19	Kamrup	17 <sup>th</sup> , 18 <sup>th</sup> & 22 <sup>nd</sup> August 2022	Completed. The Officials from Ministry of Education, Govt. of India and Sarba Shiksha Mission, Assam attended the cluster level Public Hearing.
20	Karbi Anglong	30 <sup>th</sup> April 2022	Completed
21	Karimganj	25 <sup>th</sup> & 26 <sup>th</sup> April 2022	Completed
22	Kokrajhar	25 <sup>th</sup> , 26 <sup>th</sup> & 27 <sup>th</sup> April 2022	Completed
23	Lakhimpur	17 <sup>th</sup> & 18 <sup>th</sup> August 2022	Completed
24	Majuli	18 <sup>th</sup> May 2022	Completed
25	Morigaon	18 <sup>th</sup> , 19 <sup>th</sup> & 20 <sup>th</sup> May 2022	Completed. The Officials from Ministry of Education, Govt. of India and Sarba Shiksha Mission, Assam attended the cluster level Public Hearing.
26	Nalbari	18 <sup>th</sup> , 19 <sup>th</sup> , 20 <sup>th</sup> & 21 <sup>st</sup> May 2022 and 17 <sup>th</sup> August 2022	Completed
27	South Salmara Mankachar	25 <sup>th</sup> April 2022	Completed

28	Nagaon	17 <sup>th</sup> , 18 <sup>th</sup> , 22 <sup>nd</sup> & 23 <sup>rd</sup> August 2022	Completed. The Officials from Ministry of Education, Govt. of India and Sarba Shiksha Mission, Assam attended the cluster level Public Hearing.
29	Sivasagar	25 <sup>th</sup> , 26 <sup>th</sup> & 27 <sup>th</sup> April 2022	Completed
30	Sonitpur	17 <sup>th</sup> , 18 <sup>th</sup> & 22 <sup>nd</sup> August 2022	Completed
31	Tinsukia	17 <sup>th</sup> August 2022	Completed
32	Udalguri	17 <sup>th</sup> August 2022	Completed
33	West Karbi Anglong	29 <sup>th</sup> April 2022	Completed

The Cluster level Public Hearing of PM-POSHAN was conducted in 33 districts of Assam. The Cluster level Public Hearing of PM-POSHAN was held in 3 Phases. In the 1st phase total 12 No. of district was covered, followed by 10 districts in 2<sup>nd</sup> Phase and rest 11 districts was covered in 3<sup>rd</sup> phase. The Cluster Level Public Hearing was attended by all the stakeholders of PM-POSHAN likely, members of School management committee, Head Teacher/Principal, Student & Parent Community, Civil Society members, Representative of Public Distribution System (PDS) Agent, representative of Supplier of food grains.

## SUCCESS STORY OF SOCIAL AUDIT

### 1. Udalguri District

The Kitchen Garden is an important component of Mid-Day Meal Scheme. The idea behind the scheme is to boost the nutritive value of the mid-day meals and also encourage the children to grow plants, vegetables and fruits. During the process of Social Audit of PM-POSHAN in Udalguri district it has been observed that in the three schools namely, Badulikanda LP School, Selimari LP School and No 308 Bholatar LP School under Khairabbari Elementary Block of Udalguri district don't have the kitchen Garden in School. As a part of follow-up Action to the Social Audit findings the concerned schools developed the concept of Kitchen Garden in the school premises.

### 2. Kokrajhar District

In Kokrajhar district 10 schools were audited in 3 Elementary Blocks. The issues related to Basic Infrastructure, kitchen garden, availability of potable water, hand wash, toilet etc identified during the process of Social Audit of PM-POSAHN. Total 48 nos of issues were identified in 10 schools where social audit was conducted. It is noteworthy to mention here that, during the Cluster Level Public Hearing it has been observed that all the issues have been resolved as per the recommendation of Social Audit School Sabha. This will play a vital role is successful implementation of the PM-POSHAN in the State.

### 3. Kamrup (M) District

- A. During the process of social audit in Nartap M.E. School of Dimoria Elementary Block of Kamrup (M) district it was found that Display Board on weekly Menu of Mid-Day Meal is not available at School. The school sabha recommended that Display Board will be completed within 3 days and accordingly, during Cluster Level Public Hearing it has been observed that display Board maintained at School as per PM-POSHAN guidelines.
- B. Secondly, through the process of Social Audit it was reported that Food Grains Stock Register was not maintained as per prescribed format in Nartap M.E. School. But as per the recommendatation of Social Audit School Sabha, Food Grain stock register maintained properly.
- C. Thirdly, during the process of social audit in Nartap M.E. School it was reported that egg was not served to the students on weekly basis. As a part of follow-up action to the social audit findings, egg has been provided to the students on weekly basis.



## GOOD PRACTICES OBSERVED DURING SOCIAL AUDIT OF PM POSHAN

### 1. MORIGAON DISTRICT

Bhuragaon Hospital Road L. P. School of Lahirighat Elementary Block of Morigaon district has the enrolment no. of 92 students. During the process of social audit it was observed that as per the mandate of PM-POSHAN guidelines the facilities likely, provision of Safe drinking Water ,well equipped class room , running water facilities in toilets for both Boys and girls, Cleanliness and hygienic condition in kitchen area, availability of Portable water for hand wash including soaps are provided to the students. Moreover, records related to PM-POSHAN were also maintained properly.

As a part of monitoring strategy, The School has constituted a School Management Committee (SMC) exclusively for PM -POSHAN to ensure the successful implementation of the programme.

### 2. SIVASAGAR DISTRICT

During the process of social audit in Paschim Basti Tribal M.E. School of Khelua Elementary Block of Sivasagar district, it was observed that the school developed an innovative kitchen garden in the school premises. The vegetables grown in the kitchen garden are written in both local and scientific name.

## Recommendations

1. Maintenance of records the regarding the program is being key to transparency and accountability, hence all the schools have to maintain the records properly.
2. Emergency Medical Plan is mandatorily to be ensured in all schools.
3. Additional support may be provided to develop and maintenance of robust kitchen garden in the school premises.
4. Regular flow of funds is needed to be ensured so that there is no delay in payment of honorarium to cook cum helpers.
5. Basic infrastructure facilities under PM-POSHAN are requires to be maintained on priority basis.
6. The cook cum helper who engages in the process of preparation of meals for the students, a periodical health check up cooks once in every 3 months may be done.
7. Establishment of Kitchen garden at schools needs to be ensured. Also emphasis need to given in terms of maintenance of the kitchen gardens.
8. To ensure the quality of Mid-Day Meal Food, the food testing register need to be maintained on regular basis.
9. In convergence with the Health Department initiatives may be taken for health cards for the students and also to organize health check up camps on regular interval at schools.
10. As part of IEC activity, special awareness drive on PM-POSHAN may be undertaken to sensitize the stakeholders and beneficiary of PM-POSHAN.
11. The weekly Menu of MDM as per the guidelines need to followed strictly in the schools.
12. Mechanism is required to upload the Social Audit Report of PM-POSAHN in MIS so that reports are available in Public Domain.
13. A timeline may be fixed to ensure follow up action on Social Audit findings of PM-POSHAN.



## Entry Point Meetings



School -Dakhinpat Prathamik LP School District- Jorhat



School: Kasturba Gandhi LP School District- Sonitpur

## Document Verification



School - 243 No Tangaliapara LPS, District- Barpeta



School - 1333 No Mahamaya LP School District- Cachar

## Interaction with school children/parents



School: Mowamari Dakhin LP School District- Darrang



School: Era Gaon LP School, District- Karbi Anglong

## Kitchen /Store/ Dining Area Verification



School: Dekorai HS School District: Biswanath



School: Athabari Chah Bagicha LP School District: Sivasagar



School: Bahir Salmara N Jyoti LPS, District: Dhubri



School: Pekamoni LP School, District- Majuli

**Drinking Water/Kitchen Garden Verification**



School: Milanpur LP School District - Kamrup Rural

School: Khat Pathar LP School, District: Dibrugarh

**School Sabhas**



School : Kakoijana MV School, District- Bongaigaon

School : Zarer Bazar ME School, District: Karimganj



School: Serfanguri High School, District: Kokrajhar

School: Laokhuwa HS School District: Nagaon

## SERIES OF ANNEXURE

### Annexure 1 A -Infrastructure Related Details

Sl No	District Name	No. of Schools Audited	No. of Schools where Kitchen garden is available	No. of Schools where the Quality of kitchen garden is satisfactory	No. of Schools with safe and hygienic cooking area	No. of Schools with full kitchen Shed	No. of Schools with partial kitchen shed	No. of Schools with no kitchen shed	No. of schools where safe storage of food grains is available	No. of schools having sufficient nos of cooking utensils
1	Biswanath	10	1	1	10	9	1	0	10	10
2	Bongaigaon	10	2	0	10	10	0	0	10	10
3	Dibrugarh	20	18	8	10	17	2	1	11	20
4	Goalpara	10	4	4	5	10	0	0	10	10
5	Chirang	10	0	0	7	7	0	3	10	10
6	Tinsukia	10	4	3	8	8	0	2	10	10
7	Karbi Anglong	5	3	2	3	5	0	0	5	5
8	West Karbi Anglong	5	4	1	4	4	1	0	5	4
9	Morigaon	19	14	6	19	14	4	1	10	18
10	Majuli	7	1	1	3	5	2	0	5	7
11	Sivasagar	10	2	1	10	10	0	0	10	10
12	Lakhimpur	13	2	2	13	13	0	0	13	13
13	Udalguri	18	5	4	17	18	0	0	18	18
14	Nagaon	20	0	0	11	7	6	7	6	13
15	Jorhat	10	0	0	7	0	9	1	6	10
16	Kokrajhar	10	8	2	9	2	8	0	6	8
17	Dhemaji	20	18	14	20	18	1	1	19	19
18	Barpeta	19	8	4	17	16	2	1	14	19
19	Hojai	10	6	3	10	8	2	0	9	7
20	Sonitpur	16	6	4	14	9	7	0	11	16
21	Kamrup Metro	10	6	4	8	10	0	0	5	4
22	Karimganj	20	5	5	20	4	15	1	7	9
23	Dima Hasao	10	2	0	5	0	0	10	10	1

24	Dhubri	20	2	0	18	15		5	20	0
25	Charaideo	10	0	0	10	10	0	0	10	9
26	Kamrup Rural	20	0	0	18	1	19	0	20	0
27	Golaghat	10	4	2	10	9	1	0	9	10
28	Cachar	20	2	1	16	6	5	9	11	5
29	Baksa	20	16	8	15	4	14	2	19	20
30	South Salmara & Mankachar	10	3	3	9	9	1	0	8	10
31	Nalbari	19	9	9	14	0	18	1	16	19
32	Darrang	16	15	2	14	10	5	1	9	16
33	Hailakandi	10	10	10	10	10	0	0	0	10
<b>Grand Total</b>		<b>447</b>	<b>180</b>	<b>104</b>	<b>374</b>	<b>278</b>	<b>123</b>	<b>46</b>	<b>342</b>	<b>350</b>

### Annexure 1 B -Infrastructure Related Details

Sl No	District Name	No. of Schools Audited	Mode of Cooking on traditional woods only	Mode of cooking on LPG & Firewood	Mode of cooking on LPG	Wash component like Soap, Hand Wash, drinking water and hygienic toilets are fully available	Hygienic dining area facility
1	Biswanath	10	10			10	10
2	Bongaigaon	10	5	5		9	10
3	Dibrugarh	20	20			18	10
4	Goalpara	10	10			7	5
5	Chirang	10	10			10	10
6	Tinsukia	10	10			10	10
7	Karbi Anglong	5	5			5	0
8	West Karbi Anglong	5	5			4	5
9	Morigaon	19	19			19	8
10	Majuli	7	7			7	7
11	Sivasagar	10	10			10	10
12	Lakhimpur	13	13			13	13
13	Udalguri	18	18			18	7
14	Nagaon	20	16		4	15	3
15	Jorhat	10	10			10	10
16	Kokrajhar	10	9		1	5	9
17	Dhemaji	20	20			18	17
18	Barpeta	19	19			17	14
19	Hojai	10	6	2	2	10	4
20	Sonitpur	16	16			16	15
21	Kamrup Metro	10	7	1	2	10	2
22	Karimganj	20	17		3	20	20
23	Dima Hasao	10	10			0	0
24	Dhubri	20	20			3	17
25	Charaideo	10	8		2	10	10
26	Kamrup Rural	20	20			0	18
27	Golaghat	10	10			10	10
28	Cachar	20	20			20	17

29	Baksa	20	20			19	20
30	South Salmara & Mankachar	10	10			0	9
31	Nalbari	19	19			15	19
32	Darrang	16	16			15	3
33	Hailakandi	10	10			7	10
<b>Grand Total</b>		<b>447</b>	<b>425</b>	<b>8</b>	<b>14</b>	<b>360</b>	<b>332</b>

## Annexure 2 - MDM Supply Related

Sl. No	District Name	No. of Schools Audited	MDM supplied regularly to students	Whether Weekly Menu is followed in regards to MDM	Whether locally available food items are included in weekly
1	Biswanath	10	10	10	10
2	Bongaigaon	10	10	10	10
3	Dibrugarh	20	20	20	20
4	Goalpara	10	10	10	10
5	Chirang	10	8	8	8
6	Tinsukia	10	10	10	10
7	Karbi Anglong	5	5	5	5
8	West Karbi Anglong	5	5	5	5
9	Morigaon	19	18	19	12
10	Majuli	7	7	7	7
11	Sivasagar	10	10	10	10
12	Lakhimpur	13	13	13	13
13	Udalguri	18	18	18	17
14	Nagaon	20	20	20	20
15	Jorhat	10	10	10	10
16	Kokrajhar	10	10	10	10
17	Dhemaji	20	20	20	20
18	Barpeta	19	19	19	18
19	Hojai	10	10	10	9
20	Sonitpur	16	16	16	16
21	Kamrup Metro	10	10	10	7
22	Karimganj	20	19	19	19
23	Dima Hasao	10	5	5	0
24	Dhubri	20	18	18	18
25	Charaideo	10	10	10	10
26	Kamrup Rural	20	20	20	20
27	Golaghat	10	10	10	10
28	Cachar	20	20	20	19
29	Baksa	20	20	20	20
30	South Salmara Mankachar	10	10	10	10
31	Nalbari	19	19	19	19
32	Darrang	16	16	16	16
33	Hailakandi	10	10	10	10
<b>Total</b>		<b>447</b>	<b>436</b>	<b>437</b>	<b>418</b>



**Annexure 3: District wise details on Awareness and Training**

Sl. No	District Name	No. of Schools Audited	IEC display board on MDM at prominent place is there	Awareness about MDM is there	Training on MDM is there
1	Biswanath	10	9	8	0
2	Bongaigaon	10	0	10	10
3	Dibrugarh	20	20	20	20
4	Goalpara	10	9	0	10
5	Chirang	10	6	8	0
6	Tinsukia	10	0	10	10
7	Karbi Anglong	5	5	5	5
8	West Karbi Anglong	5	0	0	0
9	Morigaon	19	15	19	16
10	Majuli	7	6	7	7
11	Sivasagar	10	10	10	0
12	Lakhimpur	13	13	13	13
13	Udalguri	18	0	0	18
14	Nagaon	20	20	12	0
15	Jorhat	10	9	6	10
16	Kokrajhar	10	7	0	2
17	Dhemaji	20	15	18	16
18	Barpeta	19	8	6	19
19	Hojai	10	4	10	1
20	Sonitpur	16	4	16	16
21	Kamrup Metro	10	8	10	3
22	Karimganj	20	18	18	0
23	Dima Hasao	10	0	10	10
24	Dhubri	20	0	0	0
25	Charaideo	10	0	0	0
26	Kamrup Rural	20	18	1	20
27	Golaghat	10	0	10	0
28	Cachar	20	9	19	20
29	Baksa	20	0	11	11

30	South Salmara & Mankachar	10	1	8	0
31	Nalbari	19	0	2	2
32	Darrang	16	16	8	9
33	Hailakandi	10	10	10	10
	<b>Grand Total</b>	<b>447</b>	<b>240</b>	<b>285</b>	<b>258</b>

**Annexure 4 A: District wise data in Documents Verification**

Sl. No	District Name	No. of Schools Audited	Required Documents produced Fully	Required Documents produced Partially	Required Documents produced Not produced at all	Required documents Updated, Maintained properly Fully	Required documents Updated, Maintained Partially	Required documents Updated /Maintained Not at all
1	Biswanath	10	0	10	0	0	10	0
2	Bongaigaon	10	5	5	0	0	10	0
3	Dibrugarh	20	19	1	0	15	5	0
4	Goalpara	10	4	6	0	5	5	0
5	Chirang	10	0	10	0	0	10	0
6	Tinsukia	10	1	9	0	0	10	0
7	Karbi Anglong	5	5	0	0	0	5	0
8	West Karbi Anglong	5	0	5	0	0	5	0
9	Morigaon	19	14	5	0	14	5	0
10	Majuli	7	2	5	0	5	2	0
11	Sivasagar	10	0	10	0	0	10	0
12	Lakhimpur	13	8	5	0	4	9	0
13	Udalguri	18	12	6	0	7	11	0
14	Nagaon	20	7	13	0	6	14	0
15	Jorhat	10	0	10	0	0	10	0
16	Kokrajhar	10	1	9	0	0	9	1
17	Dhemaji	20	1	19	0	4	16	0
18	Barpeta	19	12	7	0	9	10	0
19	Hojai	10	10	0	0	4	6	0

20	Sonitpur	16	16	0	0	13	3	0
21	Kamrup Metro	10	0	10	0	0	10	0
22	Karimganj	20	18	0	2	0	18	2
23	Dima Hasao	10	0	8	2	0	8	2
24	Dhubri	20	15	4	1	0	19	1
25	Charaideo	10	0	10	0	0	10	0
26	Kamrup Rural	20	0	20	0	0	20	0
27	Golaghat	10	4	6	0	2	8	0
28	Cachar	20	8	11	1	10	9	1
29	Baksa	20	0	20	0	0	20	0
30	South Salmara & Mankachar	10	10	0	0	9	1	0
31	Nalbari	19	0	19	0	0	19	0
32	Darrang	16	3	12	1	11	4	1
33	Hailakandi	10	0	10	0	0	10	0
	<b>Grand Total</b>	<b>447</b>	<b>175</b>	<b>265</b>	<b>7</b>	<b>118</b>	<b>321</b>	<b>8</b>

**Annexure 4 B: District wise data in Documents Verification**

Sl. No	District Name	No. of Schools Audited	Health Records including distribution of medical and health cards are available	Emergency Medical Plan are available	Records on Verification of MDM tasting by teacher are available properly.	MDM passbook are updated
1	Biswanath	10	0	0	0	10
2	Bongaigaon	10	0	10	8	10
3	Dibrugarh	20	17	20	20	20
4	Goalpara	10	6	10	7	10
5	Chirang	10	0	7	0	10
6	Tinsukia	10	0	0	10	10
7	Karbi Anglong	5	0	5	5	0

8	West Karbi Anglong	5	5	2	0	4
9	Morigaon	19	19	19	11	18
10	Majuli	7	0	7	5	7
11	Sivasagar	10	0	0	9	10
12	Lakhimpur	13	9	8	10	13
13	Udalguri	18	0	15	14	18
14	Nagaon	20	9	20	20	16
15	Jorhat	10	10	0	0	10
16	Kokrajhar	10	1	6	2	4
17	Dhemaji	20	16	19	19	20
18	Barpeta	19	6	16	14	19
19	Hojai	10	2	10	10	10
20	Sonitpur	16	12	16	12	16
21	Kamrup Metro	10	7	10	7	10
22	Karimganj	20	9	18	18	9
23	Dima Hasao	10	0	0	3	10
24	Dhubri	20	0	0	18	20
25	Charaideo	10	0	10	10	8
26	Kamrup Rural	20	20	20	20	18
27	Golaghat	10	0	10	10	10
28	Cachar	20	19	20	19	19
29	Baksa	20	11	11	20	20
30	South Salmara & Mankachar	10	0	0	10	10
31	Nalbari	19	2	2	19	19
32	Darrang	16	2	14	13	15
33	Hailakandi	10	10	10	10	10
	<b>Grand Total</b>	<b>447</b>	<b>192</b>	<b>315</b>	<b>353</b>	<b>413</b>

**Annexure 5: District wise data in terms of MDM Fund**

Sl. No	District Name	No. of Schools Audited	MDM Fund is received regularly	No. of schools where there no discrepancy is observed in MDM Fund expenditure	MDM fund is paid regularly to CCH
1	Biswanath	10	0	10	0
2	Bongaigaon	10	10	10	0
3	Dibrugarh	20	0	20	20
4	Goalpara	10	10	10	10
5	Chirang	10	10	10	10
6	Tinsukia	10	10	10	10
7	Karbi Anglong	5	5	5	5
8	West Karbi Anglong	5	4	5	5
9	Morigaon	19	19	19	18
10	Majuli	7	7	7	7
11	Sivasagar	10	0	10	10
12	Lakhimpur	13	11	12	13
13	Udalguri	18	18	18	18
14	Nagaon	20	0	20	18
15	Jorhat	10	10	10	10
16	Kokrajhar	10	10	10	10
17	Dhemaji	20	0	20	0
18	Barpeta	19	18	19	17
19	Hojai	10	2	10	7
20	Sonitpur	16	16	16	16
21	Kamrup Metro	10	10	10	0
22	Karimganj	20	20	20	0
23	Dima Hasao	10	10	10	10
24	Dhubri	20	0	20	20
25	Charaideo	10	10	10	0
26	Kamrup Rural	20	20	20	0
27	Golaghat	10	0	10	9

28	Cachar	20	20	20	20
29	Baksa	20	20	20	0
30	South Salmara & Mankachar	10	10	10	9
31	Nalbari	19	19	19	0
32	Darrang	16	16	16	15
33	Hailakandi	10	10	10	9
<b>Grand Total</b>		<b>447</b>	<b>325</b>	<b>446</b>	<b>296</b>