

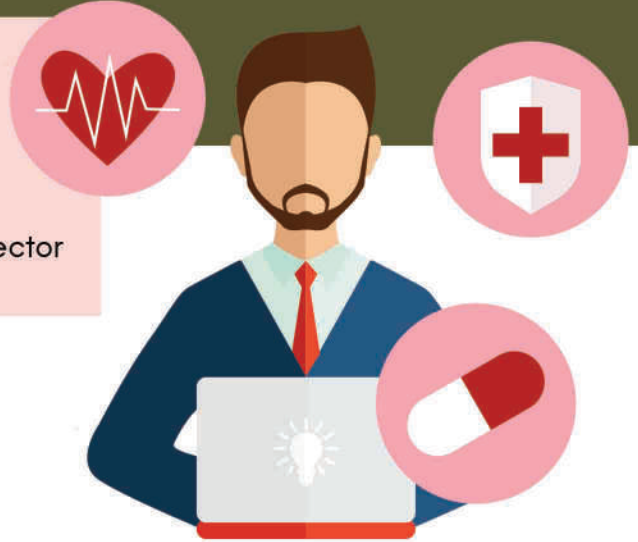
HEALTHCARE MANAGER

A Healthcare Manager is responsible for the overall management of a healthcare facility. They ensure that the facility is running smoothly, has enough staff, prepares the budget, and oversees the day-to-day functioning. Healthcare managers work with a team with staff members responsible for different functions - admissions, billing, HR and staffing, budgeting, performance evaluations, medical updates and so on.

PERSONAL COMPETENCIES



- You are good at organising and coordinating
- You are good at decision-making
- You have strong communication skills
- You have an interest in functioning of health care sector



The approx. course fee ranges between **INR 20,000 - 2,00,000***

**These figures are estimated numbers and will vary from Institute to Institute.*

SCHOLARSHIPS

• **National Scholarship Portal** - Visit www.scholarships.gov.in. Under this portal there are Central Government schemes, UGC/AICTE Schemes and Assam Government Schemes offered by different departments*

• Visit www.buddy4study.com for details on available scholarships. This is a gateway to scholarships starting from Class XI*

• Scholarships are also available in the institutes based on merit*

**(Availability of these scholarships can vary from time to time)*

LOANS

• VidyaLakshmi, www.vidyalakshmi.co.in, is a portal for students seeking education loan. This portal has been developed under the guidance of the Department of Financial Services, (Ministry of Finance), Department of Higher Education (Ministry of Human Resource Development) and Indian Banks Association (IBA)

• All banks give education loans



ENTRY PATHWAY

1. Complete 10+ 2 in any stream,
2. Complete Bachelor's degree in any stream, followed by MBA/PGDM in Hospital Management /Administration

OR

Complete Bachelor's degree and then pursue a PG Certification/Diploma course which can be pursued online alongside work

For admissions for Bachelor's degree, you must qualify in one of these entrance examinations: CUET, SET etc. and for Post graduate degree,

you must qualify in any of the following exams: CAT/ XAT/ GMAT/ SNAP/ NMAT/ CMAT.

Please check the duration of the course during enrolment



EXPECTED INCOME

**The figures are indicative & subject to change*

The approx. salary of a Healthcare Manager ranges between **INR 27,000 - 82,000*** per month.

Source: https://www.payscale.com/research/IN/Job=Healthcare_Manager/Salary

WHERE WILL YOU WORK

Places of Work: Diagnostics and hospitals, Urgent care centers, Rehabilitation centers, Nursing homes and other long-term care facilities, Specialized outpatient services, Pharmaceuticals sector, Government agencies, Hospitals and consulting firms in the health sector.

Work Environment: You will work in the office or institution space and often be in charge of leading and supervising processes. It is a demanding job often requiring quick decisions. Collaborative work and shift system are a part of the job.

Opportunities for work exist for differently abled in this field.

EXPECTED GROWTH PATH

Assistant Hospital Administrators →
Healthcare Administrator → Office
Manager → Human Resources Manager
→ Director of Human Resources

WHERE WILL YOU STUDY?

This course is offered by the Department of Management.

This list of institutes is indicative only

GOVERNMENT INSTITUTES

1. All India Institute of Medical Sciences - New Delhi
2. Srimanta Sankaradeva University of Health Sciences, Guwahati,
3. Armed Forces Medical College (AFMC) - Pune (managed by the armed forces)
4. Faculty of Management Studies - Faridabad
5. Jaipur National University - [JNU], Jaipur
6. Uttaranchal University, Dehradun
7. AKU Patna - Aryabhatta Knowledge University, Patna (Diploma in Healthcare Management)
8. BRAOU Hyderabad

PRIVATE INSTITUTES

(Please check if institute is affiliated and accredited with UGC before applying)

1. Symbiosis Institute of Health Sciences, Pune
2. Tata Institute of Social Sciences, Mumbai
3. Apollo Institute of Hospital Administration, Hyderabad
4. Assam Down Town University, Guwahati
5. Welingkar Institute of Management, Pune & Bangalore
6. Manipal College of Allied Health Sciences, Manipal
7. North East Frontier Technical University Arunachal Pradesh
8. Amity University, Noida

Information on the institute rankings can be found at -

<https://www.nirfindia.org/2022/Ranking.html>

DISTANCE LEARNING INSTITUTE

Indira Gandhi National Open University (IGNOU)

ONLINE COURSE

- NPTEL* Swayam - <https://nptel.ac.in/courses/110104095>
- Udemmy - <https://www.udemy.com/course/certificate-in-healthcare-management/>
- Coursera - <https://in.coursera.org/search?query=healthcare%20management&>

* NPTEL - National Programme on Technology Enhanced Learning. It is by the Government of India and offers a variety of courses in an audio-video form

EXAMPLE FROM THE FIELD

Meena Ganesh, as head of India's largest home healthcare company, Portea, has been working round the clock to bring quality healthcare into people's homes, even as she ensures her employees are safe and well. She holds a B.Sc. in Physics from the University of Madras and a Post- Graduate Diploma in Management from the Indian Institute of Management, Calcutta. Meena Ganesh was chosen as the Health Entrepreneur of the Year at the India Health Summit & Awards. She has been part of Fortune India's 50 Most Powerful Women in Indian Business from 2015 to 2021. In 2020, she was also awarded the Kempegowda Award by the Bruhat Bengaluru Mahanagara Palike for contribution to the city of Bengaluru.*

Source: <https://www.vogue.in/culture-and-living/content/meena-ganesh-ceo-of-portea-india-the-home-healthcare-provider-on-how-to-step-up-during-a-crisis>

*The above information is for training purposes only and will not be used for any commercial gains

Search keywords...



clinic manager, hospital administrator, medical executive